

The *innov8* electronic register is the industry's first smart register with advanced data and AMR/AMI features. The *innov8* includes a myriad of features and functions to complement and enhance virtually any water meter's performance.

Register features:

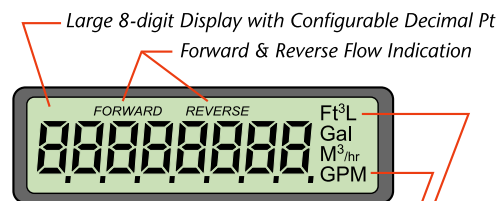
- Compact, fully encapsulated package for all meter environments.
- Large 8-digit LCD display showing totalization, measuring units and direction of flow.
- Zero-drag magnetic sensor for meter magnet tracking.
- Embedded high-resolution datalogging down to magnet-by-magnet turns.
- Flowrate and meter test functions.
- 20-year warranted battery life (10-yr full/10-yr prorated).
- Configurable leak detection, high usage/irrigation violation, backflow and zero usage functions.
- AMR compatibility through industry-standard 3-wire and 2-wire outputs.
- Additional SCADA outputs available.

Meter Compatibility:

- Compatibility with all Metron MP3 Spectrum and Enduro meters.
- Compatible with most industry displacement, multi-jet and turbine meters. Check with Metron representatives for additional information.

Data Functions:

- All radio configuration and datalogging can be performed local via the IR channel or remote via the RF channel.
- Leak detection – Flags on consistent daily usage down to single revolution of meter magnet.
- Conservation – High-usage trigger and interval configurable to adapt to residential or commercial accounts for virtually any restriction schedule.
- Backflow – Configurable for meter size and register resolution
- Zero Usage – Configurable for duration
- Datalogging – Configurable for log interval, from 5 min (1 month storage) to 1 hour (21 month storage).



GPM or m3/hr Flowrate Units
Configurable Measuring Units



Specifications:

Temperature:	-40F° to 185F° (-40C° to +85C°)
Humidity:	100%
Submersion:	IP68 Fully Submersible
Battery:	19.0Ah D-Cell
Dimensions:	4.3W x 4.8H x 2.0D inches 110W x 123H x 52D mm
Weight:	1.15 lb (0.52 kg)